

An aerial photograph of a residential neighborhood covered in snow. The houses are arranged in a grid-like pattern with streets. A large, yellow and white paraglider wing is superimposed over the center of the image, curving from the top left towards the bottom right. The text 'IKUMA 2 P' is written in a bright green, bold, sans-serif font across the middle of the wing. Below the wing, the text 'Technical specifications' is written in a white, italicized, sans-serif font. Two thin green horizontal lines extend from the left and right sides of the 'IKUMA 2 P' text.

IKUMA 2 P

Technical specifications

TECHNICAL DATA

IKUMA 2 P

| | | | 22 | 24 | 26 | 28 |
|------------------|-------------|-----|----------|----------|----------|----------|
| CELLS | Number | | 61 | 61 | 61 | 61 |
| ASPECT RATIO | Flat | | 5,7 | 5,7 | 5,7 | 5,7 |
| AREA | Flat | m2 | 22 | 24 | 26 | 28 |
| | Projected | m2 | 18,84 | 20,55 | 22,27 | 23,98 |
| SPAN | Flat | m | 11,2 | 11,7 | 12,17 | 12,63 |
| CHORD | Maximum | m | 2,41 | 2,51 | 2,62 | 2,71 |
| LINES | Total | m | 232 | 243 | 253 | 263 |
| | Main | | 2-1/4/3 | 2-1/4/3 | 2-1/4/3 | 2-1/4/3 |
| RISERS | Number | 3+1 | A-A'/B/C | A-A'/B/C | A-A'/B/C | A-A'/B/C |
| | Accelerator | mm | 145 | 145 | 145 | 145 |
| WEIGHT IN FLIGHT | Min-Max | Kg | 65-85 | 75-95 | 85-105 | 95-115 |
| GLIDER WEIGHT | | Kg | 3,3 | 3,6 | 3,8 | 4,1 |
| CERTIFICATION | EN/LTF | | B | B | B | B |

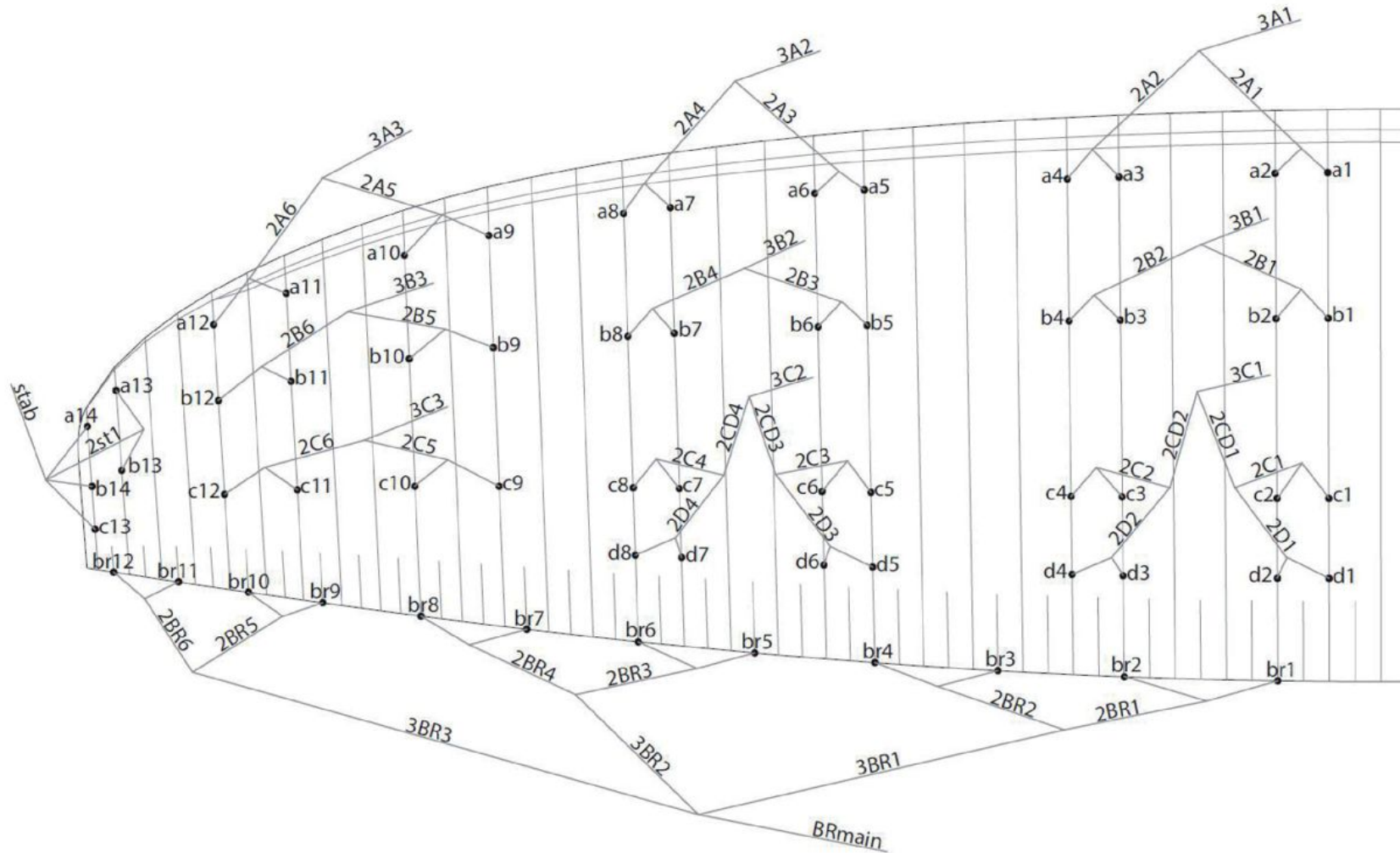
MATERIALS TECHNICAL DATA

| CANOPY | FABRIC CODE | SUPPLIER |
|-----------------------------|------------------------|--|
| UPPER SURFACE | N20 DMF / 2044 32 PS | DOMINICO TEX CO (KOREA) |
| BOTTOM SURFACE | 70000 E3H | PORCHER IND (FRANCE) |
| PROFILES | 2044 32 FM / 70000 E91 | DOMINICO TEX CO (KOREA) / PORCHER IND (FRANCE) |
| DIAGONALS | 2044 32 FM / 70000 E91 | DOMINICO TEX CO (KOREA) / PORCHER IND (FRANCE) |
| LOOPS | LKI - 10 | KOLON IND. (KOREA) |
| REINFORCEMENT LOOPS | RIPSTOP FABRIC | DOMINICO TEX CO (KOREA) |
| TRAILING EDGE REINFORCEMENT | MYLAR | D-P (GERMANY) |
| RIBS REINFORCEMENT | LTN-0.8 STICK | SPORTWARE CO.CHINA |
| THREAD | SERAFIL 60 | AMAN (GERMANY) |

| SUSPENSION LINES | FABRIC CODE | SUPPLIER |
|------------------|--------------|------------------------|
| UPPER CASCADES | DC - 60 | LIROS GMHB (GERMANY) |
| UPPER CASCADES | DC - 40 | LIROS GMHB (GERMANY) |
| MIDDLE CASCADES | DC - 60 | LIROS GMHB (GERMANY) |
| MIDDLE CASCADES | DC - 40 | LIROS GMHB (GERMANY) |
| MIDDLE CASCADES | A-8000/U 70 | EDELRID (GERMANY) |
| MIDDLE CASCADES | A-8000/U 90 | EDELRID (GERMANY) |
| MIDDLE CASCADES | A-8000/U 130 | EDELRID (GERMANY) |
| MAIN | A-8000/U 90 | EDELRID (GERMANY) |
| MAIN | A-8000/U 130 | EDELRID (GERMANY) |
| MAIN | A-8000/U 190 | EDELRID (GERMANY) |
| MAIN | A-8000/U 230 | EDELRID (GERMANY) |
| MAIN BREAK | TNL - 280 | TEIJIM LIMITED (JAPAN) |
| THREAD | SERAFIL 60 | AMAN (GERMANY) |

| RISERS | FABRIC CODE | SUPPLIER |
|-----------------|-------------|------------------------|
| MATERIAL | 3455 | COUSIN (FRANCE) |
| COLOR INDICATOR | 10148 | LIROS GMHB (GERMANY) |
| THREAD | 210D | TECNI SANGLES (FRANCE) |
| MAILLONS | V138 | COATS (ENGLAND) |
| PULLEYS | RF25109 | RONSTAN (AUSTRALIA) |

SUSPENSION PLAN



| | | | |
|----------|-----------|----------|----------|
| A | A' | B | C |
| 3A1 | 3A3 | 3B1 | 3C1 |
| 3A2 | | 3B2 | 3C2 |
| | | 3B3 | 3C3 |
| | | stab | |



COLORS TECHNICAL DATA

| | | | | |
|--------------|-----|------------|--------------------|----------|
| MAGIC | SB1 | ROYAL BLUE | TOP | REF: 317 |
| | SB2 | WHITE | BOTTOM - ALL WHITE | REF: 001 |
| | SB3 | WHITE | PLUME | REF: 001 |
| | SB4 | BLACK | SHADOW | REF: 102 |
| | SB5 | BLACK | VOLUME SHADOW | REF: 102 |



| | | | | |
|------------|-----|--------|--------------------|----------|
| SUN | SB1 | ORANGE | TOP | REF: 744 |
| | SB2 | WHITE | BOTTOM - ALL WHITE | REF: 001 |
| | SB3 | WHITE | PLUME | REF: 001 |
| | SB4 | BLACK | SHADOW | REF: 102 |
| | SB5 | BLACK | VOLUME SHADOW | REF: 102 |



WING LOAD TECHNICAL DATA

IKUMA 2 P

| 22 | | 24 | | 26 | | 28 | |
|--------|-------|--------|-------|--------|-------|--------|-------|
| P.T.V. | KG/M2 | P.T.V. | KG/M2 | P.T.V. | KG/M2 | P.T.V. | KG/M2 |
| 65 = | 2,95 | 75 = | 3,13 | 85 = | 3,27 | 95 = | 3,39 |
| 66 = | 3,00 | 76 = | 3,17 | 86 = | 3,31 | 96 = | 3,43 |
| 67 = | 3,05 | 77 = | 3,21 | 87 = | 3,35 | 97 = | 3,46 |
| 68 = | 3,09 | 78 = | 3,25 | 88 = | 3,38 | 98 = | 3,50 |
| 69 = | 3,14 | 79 = | 3,29 | 89 = | 3,42 | 99 = | 3,54 |
| 70 = | 3,18 | 80 = | 3,33 | 90 = | 3,46 | 100 = | 3,57 |
| 71 = | 3,23 | 81 = | 3,38 | 91 = | 3,50 | 101 = | 3,61 |
| 72 = | 3,27 | 82 = | 3,42 | 92 = | 3,54 | 102 = | 3,64 |
| 73 = | 3,32 | 83 = | 3,46 | 93 = | 3,58 | 103 = | 3,68 |
| 74 = | 3,36 | 84 = | 3,50 | 94 = | 3,62 | 104 = | 3,71 |
| 75 = | 3,41 | 85 = | 3,54 | 95 = | 3,65 | 105 = | 3,75 |
| 76 = | 3,45 | 86 = | 3,58 | 96 = | 3,69 | 106 = | 3,79 |
| 77 = | 3,50 | 87 = | 3,63 | 97 = | 3,73 | 107 = | 3,82 |
| 78 = | 3,55 | 88 = | 3,67 | 98 = | 3,77 | 108 = | 3,86 |
| 79 = | 3,59 | 89 = | 3,71 | 99 = | 3,81 | 109 = | 3,89 |
| 80 = | 3,64 | 90 = | 3,75 | 100 = | 3,85 | 110 = | 3,93 |
| 81 = | 3,68 | 91 = | 3,79 | 101 = | 3,88 | 111 = | 3,96 |
| 82 = | 3,73 | 92 = | 3,83 | 102 = | 3,92 | 112 = | 4,00 |
| 83 = | 3,77 | 93 = | 3,88 | 103 = | 3,96 | 113 = | 4,04 |
| 84 = | 3,82 | 94 = | 3,92 | 104 = | 4,00 | 114 = | 4,07 |
| 85 = | 3,86 | 95 = | 3,96 | 105 = | 4,04 | 115 = | 4,11 |

LINES TECHNICAL DATA

IKUMA 2 P

24

| REF. | MAT. | kg | COLOUR | mm | REF. | MAT. | kg | COLOUR | mm | REF. | MAT. | kg | COLOUR | mm | REF. | MAT. | kg | COLOUR | mm | ref. | mat. | kg | COLOUR | mm |
|------|--------|-----|---------|------|------|--------|-----|---------|-------|------|--------|-----|---------|------|------|--------|----|---------|-----|--------|------|-----|--------|------------------|
| a1 | DC | 60 | WHT | 314 | b1 | DC | 60 | WHT | 310 | c1 | DC | 40 | WHT | 313 | d1 | DC | 40 | WHT | 314 | br1 | DC | 40 | WHT | 891 |
| a2 | DC | 60 | WHT | 264 | b2 | DC | 60 | WHT | 260 | c2 | DC | 40 | WHT | 247 | d2 | DC | 40 | WHT | 253 | br2 | DC | 40 | WHT | 463 |
| a3 | DC | 60 | WHT | 285 | b3 | DC | 60 | WHT | 281 | c3 | DC | 40 | WHT | 270 | d3 | DC | 40 | WHT | 276 | br3 | DC | 40 | WHT | 638 |
| a4 | DC | 60 | WHT | 296 | b4 | DC | 60 | WHT | 292 | c4 | DC | 40 | WHT | 300 | d4 | DC | 40 | WHT | 299 | br4 | DC | 40 | WHT | 654 |
| a5 | DC | 60 | WHT | 291 | b5 | DC | 60 | WHT | 286 | c5 | DC | 40 | WHT | 291 | d5 | DC | 40 | WHT | 293 | br5 | DC | 40 | WHT | 666 |
| a6 | DC | 60 | WHT | 257 | b6 | DC | 40 | WHT | 253 | c6 | DC | 40 | WHT | 243 | d6 | DC | 40 | WHT | 245 | br6 | DC | 40 | WHT | 491 |
| a7 | DC | 60 | WHT | 255 | b7 | DC | 40 | WHT | 249 | c7 | DC | 40 | WHT | 241 | d7 | DC | 40 | WHT | 255 | br7 | DC | 40 | WHT | 475 |
| a8 | DC | 60 | WHT | 270 | b8 | DC | 60 | WHT | 266 | c8 | DC | 40 | WHT | 272 | d8 | DC | 40 | WHT | 267 | br8 | DC | 40 | WHT | 598 |
| a9 | DC | 60 | WHT | 575 | b9 | DC | 40 | WHT | 559 | c9 | DC | 40 | WHT | 559 | | | | | | br9 | DC | 40 | WHT | 408 |
| a10 | DC | 40 | WHT | 489 | b10 | DC | 40 | WHT | 478 | c10 | DC | 40 | WHT | 472 | | | | | | br10 | DC | 40 | WHT | 358 |
| a11 | DC | 40 | WHT | 543 | b11 | DC | 40 | WHT | 514 | c11 | DC | 40 | WHT | 502 | | | | | | br11 | DC | 40 | WHT | 319 |
| a12 | DC | 40 | WHT | 514 | b12 | DC | 40 | WHT | 477 | c12 | DC | 40 | WHT | 470 | | | | | | br12 | DC | 40 | WHT | 401 |
| a13 | DC | 40 | WHT | 798 | b13 | DC | 40 | WHT | 774 | c13 | DC | 40 | WHT | 1565 | | | | | | | | | | |
| a14 | DC | 40 | WHT | 1502 | b14 | DC | 40 | WHT | 1500 | | | | | | | | | | | | | | | |
| 2A1 | 8000/U | 130 | NATURAL | 1914 | 2B1 | 8000/U | 130 | NATURAL | 1.889 | 2C1 | 8000/U | 70 | NATURAL | 533 | 2D1 | 8000/U | 70 | NATURAL | 618 | 2BR1 | DC | 40 | WHT | 1.067 |
| 2A2 | 8000/U | 130 | NATURAL | 1853 | 2B2 | 8000/U | 130 | NATURAL | 1.829 | 2C2 | 8000/U | 70 | NATURAL | 497 | 2D2 | 8000/U | 70 | Natural | 581 | 2BR2 | DC | 40 | WHT | 727 |
| 2A3 | 8000/U | 130 | Natural | 1765 | 2B3 | 8000/U | 130 | Natural | 1.732 | 2C3 | 8000/U | 70 | NATURAL | 491 | 2D3 | 8000/U | 70 | Natural | 570 | 2BR3 | DC | 40 | WHT | 844 |
| 2A4 | 8000/U | 90 | NATURAL | 1712 | 2B4 | 8000/U | 90 | NATURAL | 1.687 | 2C4 | 8000/U | 70 | NATURAL | 475 | 2D4 | 8000/U | 70 | NATURAL | 535 | 2BR4 | DC | 40 | WHT | 818 |
| 2A5 | 8000/U | 70 | NATURAL | 1609 | 2B5 | 8000/U | 70 | NATURAL | 1.582 | 2C5 | 8000/U | 70 | NATURAL | 1414 | | | | | | 2BR5 | DC | 40 | WHT | 513 |
| 2A6 | 8000/U | 70 | NATURAL | 1454 | 2B6 | 8000/U | 70 | NATURAL | 1461 | 2C6 | 8000/U | 70 | NATURAL | 1298 | | | | | | 2BR6 | DC | 40 | WHT | 529 |
| | | | | | 2ST1 | DC | 40 | WHT | 774 | 2CD1 | 8000/U | 90 | NATURAL | 812 | | | | | | 3BR1 | DC | 60 | WHT | 2606 |
| | | | | | STAB | 8000/U | 90 | NATURAL | 4417 | 2CD2 | 8000/U | 90 | NATURAL | 784 | | | | | | 3BR2 | DC | 60 | WHT | 2313 |
| | | | | | | | | | | 2CD3 | 8000/U | 70 | NATURAL | 761 | | | | | | 3BR3 | DC | 60 | WHT | 2661 |
| | | | | | | | | | | 2CD4 | 8000/U | 70 | NATURAL | 731 | | | | | | | | | | |
| 3A1 | 8000/U | 230 | NATURAL | 4527 | 3B1 | 8000/U | 190 | NATURAL | 4458 | 3C1 | 8000/U | 190 | NATURAL | 5109 | | | | | | BRMAIN | TNL | 280 | RED | 3339 |
| 3A2 | 8000/U | 190 | NATURAL | 4558 | 3B2 | 8000/U | 130 | NATURAL | 4504 | 3C2 | 8000/U | 130 | NATURAL | 5088 | | | | | | | | | | KNOT POINT: 3139 |
| 3A3 | 8000/U | 130 | NATURAL | 4271 | 3B3 | 8000/U | 90 | NATURAL | 4245 | 3C3 | 8000/U | 90 | NATURAL | 4490 | | | | | | | | | | |

LINES TECHNICAL DATA

IKUMA 2 P

26

| REF. | MAT. | KG | COLOUR | MM | REF. | MAT. | KG | COLOUR | MM | REF. | MAT. | KG | COLOUR | MM | REF. | MAT. | KG | COLOUR | MM | REF. | MAT. | KG | COLOUR | MM |
|------|--------|-----|---------|------|------|--------|-----|---------|-------|------|--------|-----|---------|------|------|--------|----|---------|-----|--------|------|-----|--------|------------------|
| a1 | DC | 60 | WHT | 326 | b1 | DC | 60 | WHT | 322 | c1 | DC | 40 | WHT | 326 | d1 | DC | 40 | WHT | 327 | br1 | DC | 40 | WHT | 918 |
| a2 | DC | 60 | WHT | 275 | b2 | DC | 60 | WHT | 271 | c2 | DC | 40 | WHT | 257 | d2 | DC | 40 | WHT | 263 | br2 | DC | 40 | WHT | 464 |
| a3 | DC | 60 | WHT | 296 | b3 | DC | 60 | WHT | 292 | c3 | DC | 40 | WHT | 280 | d3 | DC | 40 | WHT | 287 | br3 | DC | 40 | WHT | 652 |
| a4 | DC | 60 | WHT | 308 | b4 | DC | 60 | WHT | 304 | c4 | DC | 40 | WHT | 312 | d4 | DC | 40 | WHT | 311 | br4 | DC | 40 | WHT | 684 |
| a5 | DC | 60 | WHT | 303 | b5 | DC | 60 | WHT | 297 | c5 | DC | 40 | WHT | 303 | d5 | DC | 40 | WHT | 305 | br5 | DC | 40 | WHT | 690 |
| a6 | DC | 60 | WHT | 268 | b6 | DC | 40 | WHT | 264 | c6 | DC | 40 | WHT | 253 | d6 | DC | 40 | WHT | 255 | br6 | DC | 40 | WHT | 517 |
| a7 | DC | 60 | WHT | 266 | b7 | DC | 40 | WHT | 259 | c7 | DC | 40 | WHT | 250 | d7 | DC | 40 | WHT | 266 | br7 | DC | 40 | WHT | 496 |
| a8 | DC | 60 | WHT | 281 | b8 | DC | 60 | WHT | 277 | c8 | DC | 40 | WHT | 283 | d8 | DC | 40 | WHT | 278 | br8 | DC | 40 | WHT | 623 |
| a9 | DC | 60 | WHT | 599 | b9 | DC | 40 | WHT | 581 | c9 | DC | 40 | WHT | 582 | | | | | | br9 | DC | 40 | WHT | 429 |
| a10 | DC | 40 | WHT | 509 | b10 | DC | 40 | WHT | 498 | c10 | DC | 40 | WHT | 491 | | | | | | br10 | DC | 40 | WHT | 371 |
| a11 | DC | 40 | WHT | 566 | b11 | DC | 40 | WHT | 535 | c11 | DC | 40 | WHT | 523 | | | | | | br11 | DC | 40 | WHT | 323 |
| a12 | DC | 40 | WHT | 535 | b12 | DC | 40 | WHT | 496 | c12 | DC | 40 | WHT | 490 | | | | | | br12 | DC | 40 | WHT | 414 |
| a13 | DC | 40 | WHT | 831 | b13 | DC | 40 | WHT | 805 | c13 | DC | 40 | WHT | 1629 | | | | | | | | | | |
| a14 | DC | 40 | WHT | 1564 | b14 | DC | 40 | WHT | 1561 | | | | | | | | | | | | | | | |
| 2A1 | 8000/U | 130 | NATURAL | 1991 | 2B1 | 8000/U | 130 | NATURAL | 1.965 | 2C1 | 8000/U | 70 | NATURAL | 554 | 2D1 | 8000/U | 70 | NATURAL | 643 | 2BR1 | DC | 40 | WHT | 1.084 |
| 2A2 | 8000/U | 130 | NATURAL | 1930 | 2B2 | 8000/U | 130 | NATURAL | 1.906 | 2C2 | 8000/U | 70 | NATURAL | 518 | 2D2 | 8000/U | 70 | Natural | 605 | 2BR2 | DC | 40 | WHT | 742 |
| 2A3 | 8000/U | 130 | Natural | 1837 | 2B3 | 8000/U | 130 | Natural | 1.802 | 2C3 | 8000/U | 70 | NATURAL | 511 | 2D3 | 8000/U | 70 | Natural | 593 | 2BR3 | DC | 40 | WHT | 874 |
| 2A4 | 8000/U | 90 | NATURAL | 1783 | 2B4 | 8000/U | 90 | NATURAL | 1.757 | 2C4 | 8000/U | 70 | NATURAL | 494 | 2D4 | 8000/U | 70 | NATURAL | 558 | 2BR4 | DC | 40 | WHT | 859 |
| 2A5 | 8000/U | 70 | NATURAL | 1675 | 2B5 | 8000/U | 70 | NATURAL | 1.647 | 2C5 | 8000/U | 70 | NATURAL | 1472 | | | | | | 2BR5 | DC | 40 | WHT | 533 |
| 2A6 | 8000/U | 70 | NATURAL | 1514 | 2B6 | 8000/U | 70 | NATURAL | 1521 | 2C6 | 8000/U | 70 | NATURAL | 1351 | | | | | | 2BR6 | DC | 40 | WHT | 555 |
| | | | | | 2ST1 | DC | 40 | WHT | 806 | 2CD1 | 8000/U | 90 | NATURAL | 845 | | | | | | 3BR1 | DC | 60 | WHT | 2713 |
| | | | | | STAB | 8000/U | 90 | NATURAL | 4623 | 2CD2 | 8000/U | 90 | NATURAL | 816 | | | | | | 3BR2 | DC | 60 | WHT | 2414 |
| | | | | | | | | | | 2CD3 | 8000/U | 70 | NATURAL | 792 | | | | | | 3BR3 | DC | 60 | WHT | 2771 |
| | | | | | | | | | | 2CD4 | 8000/U | 70 | NATURAL | 761 | | | | | | | | | | |
| 3A1 | 8000/U | 230 | NATURAL | 4733 | 3B1 | 8000/U | 190 | NATURAL | 4660 | 3C1 | 8000/U | 190 | NATURAL | 5338 | | | | | | BRMAIN | TNL | 280 | RED | 3485 |
| 3A2 | 8000/U | 190 | NATURAL | 4768 | 3B2 | 8000/U | 130 | NATURAL | 4713 | 3C2 | 8000/U | 130 | NATURAL | 5319 | | | | | | | | | | KNOT POINT: 3285 |
| 3A3 | 8000/U | 130 | NATURAL | 4471 | 3B3 | 8000/U | 90 | NATURAL | 4445 | 3C3 | 8000/U | 90 | NATURAL | 4698 | | | | | | | | | | |

LINES TECHNICAL DATA

IKUMA 2 P

28

| REF. | MAT. | kg | COLOUR | mm | REF. | MAT. | kg | COLOUR | mm | REF. | MAT. | kg | COLOUR | mm | REF. | MAT. | kg | COLOUR | mm | ref. | mat. | kg | COLOUR | mm |
|------|--------|-----|---------|------|------|--------|-----|---------|-------|------|--------|-----|---------|------|------|--------|----|---------|-----|--------|------|-----|--------|------------------|
| a1 | DC | 60 | WHT | 338 | b1 | DC | 60 | WHT | 334 | c1 | DC | 40 | WHT | 338 | d1 | DC | 40 | WHT | 339 | br1 | DC | 40 | WHT | 953 |
| a2 | DC | 60 | WHT | 286 | b2 | DC | 60 | WHT | 282 | c2 | DC | 40 | WHT | 267 | d2 | DC | 40 | WHT | 274 | br2 | DC | 40 | WHT | 482 |
| a3 | DC | 60 | WHT | 307 | b3 | DC | 60 | WHT | 303 | c3 | DC | 40 | WHT | 291 | d3 | DC | 40 | WHT | 297 | br3 | DC | 40 | WHT | 676 |
| a4 | DC | 60 | WHT | 320 | b4 | DC | 60 | WHT | 316 | c4 | DC | 40 | WHT | 324 | d4 | DC | 40 | WHT | 323 | br4 | DC | 40 | WHT | 710 |
| a5 | DC | 60 | WHT | 314 | b5 | DC | 60 | WHT | 308 | c5 | DC | 40 | WHT | 314 | d5 | DC | 40 | WHT | 316 | br5 | DC | 40 | WHT | 716 |
| a6 | DC | 60 | WHT | 278 | b6 | DC | 40 | WHT | 274 | c6 | DC | 40 | WHT | 263 | d6 | DC | 40 | WHT | 265 | br6 | DC | 40 | WHT | 537 |
| a7 | DC | 60 | WHT | 276 | b7 | DC | 40 | WHT | 269 | c7 | DC | 40 | WHT | 260 | d7 | DC | 40 | WHT | 276 | br7 | DC | 40 | WHT | 514 |
| a8 | DC | 60 | WHT | 292 | b8 | DC | 60 | WHT | 288 | c8 | DC | 40 | WHT | 294 | D8 | DC | 40 | WHT | 288 | br8 | DC | 40 | WHT | 647 |
| a9 | DC | 60 | WHT | 621 | b9 | DC | 40 | WHT | 603 | c9 | DC | 40 | WHT | 604 | | | | | | br9 | DC | 40 | WHT | 445 |
| a10 | DC | 40 | WHT | 528 | B10 | DC | 40 | WHT | 517 | c10 | DC | 40 | WHT | 510 | | | | | | BR10 | DC | 40 | WHT | 386 |
| a11 | DC | 40 | WHT | 587 | B11 | DC | 40 | WHT | 555 | c11 | DC | 40 | WHT | 542 | | | | | | BR11 | DC | 40 | WHT | 335 |
| a12 | DC | 40 | WHT | 556 | B12 | DC | 40 | WHT | 515 | c12 | DC | 40 | WHT | 508 | | | | | | BR12 | DC | 40 | WHT | 429 |
| a13 | DC | 40 | WHT | 862 | B13 | DC | 40 | WHT | 836 | c13 | DC | 40 | WHT | 1690 | | | | | | | | | | |
| a14 | DC | 40 | WHT | 1623 | B14 | DC | 40 | WHT | 1620 | | | | | | | | | | | | | | | |
| 2A1 | 8000/U | 130 | NATURAL | 2065 | 2B1 | 8000/U | 130 | NATURAL | 2.038 | 2C1 | 8000/U | 70 | NATURAL | 574 | 2D1 | 8000/U | 70 | NATURAL | 666 | 2BR1 | DC | 40 | WHT | 1.124 |
| 2A2 | 8000/U | 130 | NATURAL | 2005 | 2B2 | 8000/U | 130 | NATURAL | 1.979 | 2C2 | 8000/U | 70 | NATURAL | 538 | 2D2 | 8000/U | 70 | Natural | 628 | 2BR2 | DC | 40 | WHT | 771 |
| 2A3 | 8000/U | 130 | NATURAL | 1906 | 2B3 | 8000/U | 130 | NATURAL | 1.869 | 2C3 | 8000/U | 70 | NATURAL | 530 | 2D3 | 8000/U | 70 | NATURAL | 615 | 2BR3 | DC | 40 | WHT | 906 |
| 2A4 | 8000/U | 90 | NATURAL | 1851 | 2B4 | 8000/U | 90 | NATURAL | 1.824 | 2C4 | 8000/U | 70 | NATURAL | 513 | 2D4 | 8000/U | 70 | NATURAL | 579 | 2BR4 | DC | 40 | WHT | 892 |
| 2A5 | 8000/U | 70 | NATURAL | 1738 | 2B5 | 8000/U | 70 | NATURAL | 1.709 | 2C5 | 8000/U | 70 | NATURAL | 1527 | | | | | | 2BR5 | DC | 40 | WHT | 553 |
| 2A6 | 8000/U | 70 | NATURAL | 1571 | 2B6 | 8000/U | 70 | NATURAL | 1578 | 2C6 | 8000/U | 70 | NATURAL | 1402 | | | | | | 2BR6 | DC | 40 | WHT | 577 |
| | | | | | 2ST1 | DC | 40 | WHT | 837 | 2CD1 | 8000/U | 90 | NATURAL | 876 | | | | | | 3BR1 | DC | 60 | WHT | 2812 |
| | | | | | STAB | 8000/U | 90 | NATURAL | 4822 | 2CD2 | 8000/U | 90 | NATURAL | 848 | | | | | | 3BR2 | DC | 60 | WHT | 2506 |
| | | | | | | | | | | 2CD3 | 8000/U | 70 | NATURAL | 822 | | | | | | 3BR3 | DC | 60 | WHT | 2879 |
| | | | | | | | | | | 2CD4 | 8000/U | 70 | NATURAL | 790 | | | | | | | | | | |
| 3A1 | 8000/U | 230 | NATURAL | 4931 | 3B1 | 8000/U | 190 | NATURAL | 4855 | 3C1 | 8000/U | 190 | NATURAL | 5558 | | | | | | BRMAIN | TNL | 280 | RED | 3597 |
| 3A2 | 8000/U | 190 | NATURAL | 4971 | 3B2 | 8000/U | 130 | NATURAL | 4913 | 3C2 | 8000/U | 130 | NATURAL | 5542 | | | | | | | | | | KNOT POINT: 3397 |
| 3A3 | 8000/U | 130 | NATURAL | 4664 | 3B3 | 8000/U | 90 | NATURAL | 4636 | 3C3 | 8000/U | 90 | NATURAL | 4899 | | | | | | | | | | |

NIVIUK IKUMA 2 P 24

LINES HEIGHT mm

| | A | B | C | D | BR |
|----|------|------|------|------|------|
| 1 | 7242 | 7144 | 7245 | 7330 | 7723 |
| 2 | 7192 | 7094 | 7179 | 7270 | 7300 |
| 3 | 7152 | 7055 | 7140 | 7230 | 7135 |
| 4 | 7163 | 7066 | 7170 | 7253 | 7151 |
| 5 | 7101 | 7009 | 7111 | 7192 | 6987 |
| 6 | 7067 | 6976 | 7063 | 7144 | 6812 |
| 7 | 7012 | 6927 | 7015 | 7089 | 6770 |
| 8 | 7027 | 6944 | 7046 | 7101 | 6893 |
| 9 | 6945 | 6873 | 6943 | | 6746 |
| 10 | 6859 | 6792 | 6856 | | 6696 |
| 11 | 6758 | 6707 | 6770 | | 6673 |
| 12 | 6729 | 6670 | 6738 | | 6755 |
| 13 | 6476 | 6452 | 6469 | | |
| 14 | 6406 | 6404 | | | |

RISERS LENGHT mm

| | A | B | C | |
|--|-----|-----|-----|-------------|
| | 470 | 470 | 470 | STANDARD |
| | 325 | 390 | 490 | ACCELERATED |

NIVIUK IKUMA 2 P 26

LINES HEIGHT mm

| | A | B | C | D | BR |
|----|------|------|------|------|------|
| 1 | 7540 | 7435 | 7525 | 7615 | 8053 |
| 2 | 7487 | 7385 | 7462 | 7551 | 7588 |
| 3 | 7448 | 7345 | 7413 | 7503 | 7437 |
| 4 | 7460 | 7358 | 7446 | 7531 | 7468 |
| 5 | 7396 | 7296 | 7399 | 7474 | 7305 |
| 6 | 7364 | 7263 | 7350 | 7429 | 7134 |
| 7 | 7309 | 7212 | 7297 | 7379 | 7098 |
| 8 | 7319 | 7227 | 7326 | 7393 | 7219 |
| 9 | 7236 | 7153 | 7236 | | 7064 |
| 10 | 7149 | 7075 | 7142 | | 7004 |
| 11 | 7048 | 6986 | 7050 | | 6974 |
| 12 | 7015 | 6947 | 7014 | | 7067 |
| 13 | 6751 | 6727 | 6739 | | |
| 14 | 6682 | 6677 | | | |

RISERS LENGHT mm

| | A | B | C | |
|--|-----|-----|-----|-------------|
| | 470 | 470 | 470 | STANDARD |
| | 325 | 390 | 490 | ACCELERATED |

NIVIUK IKUMA 2 P 28

LINES HEIGHT mm

| | A | B | C | D | BR |
|----|------|------|------|------|------|
| 1 | 7820 | 7716 | 7828 | 7921 | 8321 |
| 2 | 7768 | 7664 | 7756 | 7855 | 7851 |
| 3 | 7728 | 7625 | 7715 | 7812 | 7692 |
| 4 | 7741 | 7638 | 7749 | 7838 | 7726 |
| 5 | 7680 | 7579 | 7689 | 7777 | 7560 |
| 6 | 7644 | 7544 | 7637 | 7725 | 7381 |
| 7 | 7586 | 7494 | 7587 | 7668 | 7344 |
| 8 | 7603 | 7513 | 7621 | 7681 | 7477 |
| 9 | 7512 | 7438 | 7515 | | 7310 |
| 10 | 7418 | 7351 | 7421 | | 7250 |
| 11 | 7310 | 7259 | 7328 | | 7223 |
| 12 | 7279 | 7219 | 7294 | | 7317 |
| 13 | 7008 | 6982 | 7005 | | |
| 14 | 6935 | 6933 | | | |

RISERS LENGHT mm

| A | B | C | |
|-----|-----|-----|-------------|
| 470 | 470 | 470 | STANDARD |
| 325 | 390 | 490 | ACCELERATED |

SUSPENSION TECHNICAL DATA

IKUMA 2

| | | | | | | | | | |
|-------------------------------------|--------------|---------|---------|----------|--------|----------|----------|-----------|-----------|
| MATERIAL CODE | | DC | DC | A-8000/U | 8000/U | A-8000/U | A-8000/U | A-8000/U | TNL |
| STRENGTH CODE | | 040 | 060 | 070 | 90 | 130 | 190 | 230 | 280 |
| DIAMETER mm | Ø | 0,5 | 0,6 | 0,7 | 0,8 | 0,9 | 1,1 | 1,1 X 1,4 | 1,8 |
| CORE MATERIAL | | DYNEEMA | DYNEEMA | ARAMID | ARAMID | ARAMID | ARAMID | ARAMID | TECHNORA |
| SLEEVE MATERIAL | | NO | NO | NO | NO | NO | NO | NO | POLYESTER |
| WEIGHT G/M | TOTAL | 0,19 | 0,24 | 0,4 | 0,5 | 0,8 | 1,1 | 1,4 | 2,7 |
| BREAKING STRENGTH | MINIMUM | 40 | 60 | 70 | 90 | 130 | 190 | 230 | 280 |
| | MAXIMUM | 48 | 84 | 78 | 110 | 144 | 211 | 255 | 320 |
| STRENGTH AFTER | | | | | | | | | |
| 5.000 BENDING | TEST EN | 33 | 74 | 39 | 49 | 88 | 52 | 69 | 134,7 |
| CYCLES | | | | | | | | | |
| ELONGATION AT | 5 DAN EN % | | | 0,5 | 0,4 | 0,4 | 0,4 | 0,3 | 0,2 |
| | 10 DAN EN % | | 0,43 | 0,7 | 0,6 | 0,6 | 0,6 | 0,5 | 0,3 |
| | 15 DAN EN % | | | 1 | 0,8 | 0,8 | 0,7 | 0,6 | 0,4 |
| | 20 DAN EN % | | | 1,3 | 1 | 0,9 | 0,9 | 0,7 | 0,4 |
| | 25 DAN EN % | | | 1,5 | 1,3 | 1 | 1 | 0,8 | 0,5 |
| | 30 DAN EN % | | 1,2 | 2,8 | 2,3 | 1,8 | 1,6 | 1,3 | 0,9 |
| | 75 DAN EN % | | | 3,7 | 3,2 | 3,1 | 2,7 | 2,3 | 1,3 |
| | 100 DAN EN % | | | | | | 2,6 | 3,6 | 1,7 |
| | 125 DAN EN % | | | | | | 3,5 | 3,3 | 2 |
| | 150 DAN EN % | | | | | | 4,3 | 3,6 | 2,3 |
| | 175 DAN EN % | | | | | | | | 2,7 |
| | 200 DAN EN % | | | | | | | | 2,8 |
| ELONGATION MAX. BREAKING STRENGTH % | | | 3,2 | 3,9 | 4,3 | 4 | 4,4 | 4,4 | 4,1 |


PULLEY TECHNICAL DATA

DESCRIPTION

| | |
|-----------|-----------------|
| PULLEY | 20 m/m |
| CODE | RF25109 |
| MATERIALS | STAINLESS STEEL |
| | NYLON |
| | CARBON ACETAL |
| BEARING | DELRIN® |
| WEIGHT | 14 G/PIECE |

TECHNICAL SPECIFICATIONS

| | | |
|--|---------------|-------|
| | DIMENSIONS | mm |
| | L.T. | 20 |
| | H.T. | 33 |
| | Ø | 5 MAX |
| | LOAD | KG |
| | WORKING LIMIT | 200 |
| | BREAKING | 400 |



THREAD TECHNICAL DATA**SAIL MAKING**

| | |
|-------------------|--------------------------|
| NAME | SERAFIL |
| N° OF REFERENCE | 60 |
| MATERIAL | POLYESTER |
| TYPE OF FINISH | SILK |
| LINEAR DENSITY | NM 61 / 3 (DTEX 163 * 3) |
| BREAKING STRENGTH | 3,000 CN |
| ELONGATION | 17,00% |

SERAFIL PROPERTIES

| | |
|---------------------------|---------------------|
| SOLIDITY ARTIFICIAL LIGTH | ISO 105 B02 > 5 - 6 |
| SOLIDITY SWEAT | ISO 105 E04 > 4 |
| SOLIDITY WASHING | ISO 105 C04 > 3 |
| SOLIDITY GRAZE IN DRY | ISO 105 X12 > 4 |
| SOLIDITY WASHING IN DRY | ISO 105 D01 > 3 - 4 |

| | |
|---------------------------|----|
| TREATMENT WATER REPELLENT | WR |
|---------------------------|----|

RISERS MAKING

| | |
|-------------------|---------------------|
| NAME | COATS BONDED C.F.P. |
| N° OF REFERENCE | V138 |
| MATERIAL | POLYESTER |
| TYPE OF FINISH | SILK |
| BREAKING STRENGTH | 9,5 KG |
| ELONGATION | 19% |

RISERS TECHNICAL DATA**RISERS**

| | |
|-------------------|----------------------|
| N° OF REFERENCE | 3455 |
| MATERIAL | POLYESTER & TECHNORA |
| WIDTH | 12 mm |
| THICKNESS | 2,25 mm |
| BREAKING STRENGTH | 1.100 DAN |
| ELONGATION | MAX. 11% |
| WEIGHT | 21,1 G/M |
| COLOR | BLACK |

SECONDARY RISERS

| | |
|-----------------|--------------|
| N° OF REFERENCE | 10148 |
| MATERIAL | DYNEEMA SK78 |
| WIDTH | 5/6 M/M |
| THICKNESS | 1,5 M/M |
| WEIGHT | 5 G * L.M. |
| COLOR | 316 CARBON |

COLOR INDICATOR

| | |
|-------------------|-------------|
| N° OF REFERENCE | IC-G 1-2 |
| MATERIAL | POLYESTER |
| WIDTH | 70 Mm |
| THICKNESS | 0,80 Mm |
| BREAKING STRENGTH | 130 DN |
| ELONGATION | 35 % |
| WEIGHT | 32 G * L.M. |
| COLOR | GREEN |

LOOPS

| | |
|-------------------|----------|
| N° OF REFERENCE | LKI - 10 |
| MATERIAL | NYLON |
| WIDTH | 10 Mm |
| BREAKING STRENGTH | 84 KG |
| ELONGATION | 30 % |
| WEIGHT | 5,5 G/M |
| COLOR | WHITE |

Amazing Adventures
niviuk.com

 NIVIUK